



## President's Message

As we enter the second quarter of 2007 it is once again time to update all of you on the progress of a very busy year for all health care council members. The newsletter will provide the detail while I provide the highlights.

Coming to 12 cities, beginning May 8, 2007 in Minneapolis and ending in Miami in September, the Health Care Council (HCC) and Corporate Realty, Design & Management Institute will be presenting High Performance Hospitals & Medical Research Facilities. This seminar is less than a half day and provides 3 CFM points & 3 HSW learning units. This seminar is designed to have you away from your job a minimum amount of time and to be local to as many of our members as possible.

The progress of the Health Care Council's partnership with the American Society for Healthcare Engineering (ASHE) and the American Institute of Architects/Academy of Architecture for Health (AIA/AAH) continue to move forward with the next step back on the HCC. ASHE re-structured its leadership and its various committees and have requested we submit a research proposal to the ASHE Research Committee to jointly move our research initiatives forward. The AIA/AAH is open to collaboration and requested a proposal of how the HCC research efforts can best be partnered up with the AAH. We hope to have these agreements in place by the beginning of the 4th quarter.

Another exciting happening is the organizing of local HCC Networking Groups. Over the past 12 - 16 months I have received emails and phone calls from HCC members in Boston, Chicago, Seattle, Minneapolis and several other cities expressing interest in organizing local HCC Networking Groups and looking for advice and a little help. This is an exciting opportunity for the HCC officer's and we are going to do everything we can to help local groups organize, grow and collaborate with the HCC.

As always do not hesitate to call me or email me to discuss your interest in getting more involved with the council or just to let me know about a good idea for the council. I look forward to meeting as many of you as possible throughout 2007.

Gary W. Collins, AIA  
President  
IFMA Health Care Council  
312 622 3732  
Gary.collins@anshen.com

## Commercial Construction Show

**When: May 15-17, 2007**

**Where: The Donald E. Stephens Convention Center  
Chicago, Illinois**

On May 15, at the Healthcare Summit titled "Going Green: The Benefits of Environmentally Responsible Healthcare Design" HCC board member Jeff Kent of the Nemours Foundation will speak on hospital financing along with Health Care Council representatives from KaufmanHall and Corporate Design, Realty & Management Institute. Attendees will also have opportunities to discuss issues related to healthcare design and construction and green initiatives with speakers at roundtable discussions the day of the Summit.

May 16 - 17, the Commercial Construction Show offers learning seminars and a sold out exhibition hall packed with hundreds of exhibitors. Best of all, the Health Care Council collaborated with Anshen + Allen Architects, the Corporate Design, Realty & Management Institute and several HCC vendors to develop a mock green patient room that will be constructed for the first time ever on the expo floor.

Tickets for the Commercial Construction Show are still available. Visit <http://www.cc-show.net/index.php> for more details and to register.

## Call for Articles -

The HCC holds a contract with *FacilityCare* magazine to provide six articles per year to be published in *FacilityCare* magazine and sent out in advance of ASHE/PDC, NeoCon, ASHE, AIA/AAH, and IFMA's World Work Place. All members of the HCC receive a free subscription to the magazine. Guidelines for submitting an article and examples of past articles can be found on the HCC website [www.ifma-hc.org](http://www.ifma-hc.org) under Council Resources/Member Submissions.

Articles are written by facility managers, architects, engineers, consultants and vendors in the health care field and provide insight and practical information to assist and inform other HCC members on trends, practices, systems, and procedures to help you do your job better or just keep you informed. Articles should be between 1200 and 1300 words. If you are interested in submitting an article please contact Jeff Kent, VP of News and Information at 904-232-4274 or e-mail him at [jkent@nemours.org](mailto:jkent@nemours.org)

## Think Green!

### Centerpiece to spotlight green products amid a healthcare setting

**N**ew to this year's **Healthcare Building Expo** is the **Think Green! Healthcare Centerpiece**, which will feature a mock up of a Green Patient Room that could be part of any healthcare facility.

Located in the middle of the exhibition hall floor, the healthcare display will showcase ecologically-responsive options for materials used in healthcare facilities, such as sustainably-produced furniture, flooring and more.

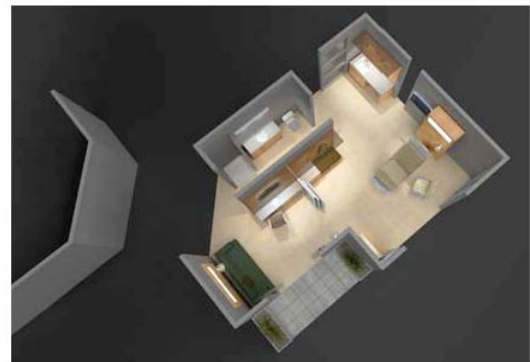
Spearheaded by **Anshen+Allen**, the exhibit will educate healthcare facility administrators, managers and staff about these sustainable products and demonstrate how to adopt green practices now. The Green Patient Room is also made possible by the **International Facilities Management Association Healthcare Council** and **Corporate Realty, Design & Construction**, as well as the participating vendors (see box).

The Green Patient Room embodies

the seven following principals:

- Create a safe and healthy room for all.
- Design the indoor environment and connections to the outdoor environment to promote health and well-being of patients, staff and families.
- Minimize the room's impact on the natural environment.
- Passive survivability: create a place that can function in the face of natural disaster.
- Intensify the use of technology in patient care.
- Create a safe and healthy room for patients, family and staff.
- Deinstitutionalize the healthcare environment.

Roughly 600 square feet in scope, the room will be divided into three zones: patient, family and staff. The patient zone includes the bathroom and part of the bedroom. It is acuity-adaptable to reduce patient moves



that in turn help minimize medical errors, nosocomial infection, and injuries (to both patients & staff) while also increasing a facility's future flexibility.

The staff zone is organized to ease stress and anxiety by reducing clutter, accommodating staff workflow and allowing for easy access to equipment.

The family zone is designed to encourage family stays. Studies have shown that families who visit frequently, stay longer and are involved in the patient care help improve healing times and patient well-being. By creating a designated area that brings the feeling of home into the patient room, family comfort is ensured.

The patient room also will demonstrate several green materials and technologies that create a more sustainable environment, including:

- Low flow rate faucet aerators, shower heads, and toilets that reduce water consumption and water-related utility costs.
- High performance lighting, glass, and insulation systems that lead to large-scale, long term reduction in energy costs. Efficient lighting technologies, for example, include T5 fluorescents, electronic ballasts, LEDs, and dual-purpose fixtures.
- Resource efficient and non-hazardous, low-VOC materials are used throughout the room as well.

### Key Players

**Exhibit Design/Coordination**  
Anshen+Allen Architects,  
San Francisco, CA

**Design Consultants**  
Corporate Realty, Design &  
Management Institute,  
Portland, OR  
International Facilities  
Management Assn (IFMA)  
Healthcare Council

**Exhibit Installer**  
Skyline Southeast, Alpharetta, GA

**Entrance Kiosk**  
M21 Industries, Dayton, OH  
Durasol Awnings, Middlebury, VT

**Centerpiece Branding**  
The Brand Culture Co.,  
Los Angeles, CA

**Bathroom Lighting / Mirror**  
Electric Mirror, Edmonds, WA

**Bathroom/Sink Accessories**  
Kimberly Clark, Atlanta, GA

**Beds, Case Goods & Furniture**  
Hill-Rom, Batesville, IN  
Nemschoff, Sheboygan, WI  
Nurture by Steelcase, Grand  
Rapids, MI

Softcare by Steelcase,  
Grand Rapids, MI  
Brayton International,  
High Point, NC  
Sitrus, Toronto, Ontario

**Ceiling Systems**  
9Wood, Springfield, OR

**Flooring Materials & Installation**  
Caliber Flooring, Chicago, IL  
Forbo, Hazleton, PA

**Framed Artwork**  
Health Environment Art Services,  
Schaumburg, IL

**Glass & Window Frames**  
Sage Electronicchromics,  
Faribault, MN  
Accurate Doorwin,  
Winnipeg, MB

**Lighting – Exam, Down, & Night**  
Cooper Lighting,  
Peachtree City, GA

**Lighting – Wall Sconce**  
Manning Lighting,  
Sheboygan, WI

**Paperless Interior Drywall & Insulation**  
Georgia Pacific, Atlanta, GA

Owens Corning, Toledo, OH

**Sinks**  
Kohler, Kohler, WI

**Water Conservation Fixtures**  
Ecotech Water LLC,  
St. Pete Beach, FL

**Window Treatment/Curtains**  
Carnegie, Rockville Centre, NY  
Maharam, NY  
DesignTex, New York, NY  
Architex, Northbrook, IL

**Wall System**  
M21 Industries, Dayton, Ohio

**Wall Panels**  
SierraPine Composite Solutions  
Roseville, CA

**Paint**  
The Sherwin Williams Co.,  
Cleveland, OH

**Painting Contractor**  
CertaPro Painters  
Oaks, PA

**Scrim Panels**  
Knight Sign Industries, Inc.,  
Tuscaloosa, AL

## “High Performance Hospitals & Medical Research Facilities Seminars”

### Coming to a city near you!

In partnership with The Corporate Realty, Design and Management Institute, we are offering our members the opportunity to spend a morning learning how to pencil out a high performance project from start to finish. This seminar series is a major step in the Council’s effort to bring educational and networking opportunities to your local area.

The half-day, seminar format includes a panel discussion at each seminar and networking time. Any members interested in helping to organize the panel or assist in promoting the seminar in their respective region should contact

Glenn Fischer at [gfischer@squarefootage.net](mailto:gfischer@squarefootage.net).

Please visit [www.squarefootage.net](http://www.squarefootage.net) to download a flyer, get more details and register. Discount tickets will be available to IFMA members for each seminar!

Minneapolis	May 8
Denver	May 10
Columbus	July 24
Boston	July 26
Washington DC	July 27
Chicago	July 31
Seattle	Sept. 12
San Francisco	Sept. 13
Houston	Sept. 25
Atlanta	Sept. 26
Miami	Sept. 28
Los Angeles - TBA	

### Announcing the new Chicago Health Care Networking Group

The Chicago Health Care Networking Group of IFMA invites all Chicago Health Care Council members to meet with us on May 10 at 9am to discuss upcoming events and help contribute to our group’s vision. All local IFMA members are welcome.

Golf with the Health Care Networking Group at the IFMA Northern Illinois and Chicago Chapter Annual Golf Outing on May 17! We are putting several foursomes together and look forward to getting to know each other better. Registration information can be found at <http://www.ifma-chicago.org/events/2007golf.php>.

Contact Rich Palmer for questions about Chicago’s Networking Group or to join one of our golf foursomes. His contact information is 312-906-6045 or [rpalmer@mchc.com](mailto:rpalmer@mchc.com).

Watch this space for events planned in Chicago and for the formation of other local groups across the United States.

## The Health Care Council begins Strategic Planning

On June 29, the Health Care Council board, committee chairs and local invited guests will meet in Chicago for a Strategic Planning retreat and develop our vision, mission and goals for the next three years. This process involves three major steps:

1. A member-wide survey to establish a base line of input from our member base. This survey will be sent out in late April/early May to HCC members. Please respond and help us plan for the future of the council.

2. Formulate a Strategic Planning Team: Council leadership will participate and it would be ideal to have your participation too. New members, long time members – everyone’s input is welcome

3. A Strategic Planning Session: The strategic planning team will convene in Chicago for a session facilitated by IFMA Headquarters staff. In a one-day session, we hope to begin the strategic planning process, developing strategic objectives and initiatives to help us grow and succeed.

Clear definitions of who we are, where we are, where we would like to be and how we plan to get there are crucial to the livelihood of every organization, and this, in short, is what IFMA’s strategic planning process is all about.

If you would like more information, or would like to participate in our planning, please contact

Gary Collins

[gary.collins@anshen.com](mailto:gary.collins@anshen.com).

## Local Health Care Council Networking Groups

The Health Care Council is beginning an initiative to assist local Health Care Council networking groups to form. If you are interested in organizing a local group to network and learn from each other, we can help!

Chicago’s Health Care Networking Group had their first planning meeting in March and are well on their way to establishing a schedule of events and initiatives. Many other local chapters have expressed interest in doing the same thing.

The Health Care Council will dedicate a section of each newsletter to promoting events, is creating a “Local Networking Group” page on our website, and can assist with e-mail announcements and reminders to members in your local area.

For assistance, contact

Benjamin Policicchio at [bpolici@conemaugh.org](mailto:bpolici@conemaugh.org) or

Jennifer Coble at [Jennifer.coble@gmail.com](mailto:Jennifer.coble@gmail.com)

## Calendar of Events

**May 2-4**

### **IFMA's Industries Forum**

Atlanta, GA

Register by April 24 at [www.ifma.org/if](http://www.ifma.org/if)

Join us for our Spring meeting, a full day of Health Care FM-specific learning opportunities, and tours of Emory University's Winship Cancer Center and Children's Center.

Members can also join us for dinner at Tringali's with the Research & Development and Environmental Health & Safety Councils, Thursday, May 3, 2007. Contact Sylvia Beaulieu at [beaulieu@slamcoll.com](mailto:beaulieu@slamcoll.com) to reserve your seat.

**May 15-17**

### **Commercial Construction Show**

Chicago, IL

Register at <http://www.cc-show.net/index.php>

It's not too late to get discounted tickets by contacting Jennifer Coble at [Jennifer.coble@gmail.com](mailto:Jennifer.coble@gmail.com)

On May 15, hear the Health Care Council-sponsored panel on financing featuring representatives from KaufmanHall, Nemours Foundation and Corporate Realty, Design & Management Institute. May 16 and 17 visit the Green Patient Room Mock-up in the expo hall, learn at healthcare seminars and visit hundreds of exhibitors.

**May 8-September 28**

### **High Performance Hospitals & Medical Research Facilities Seminar**

With the Corporate Realty, Design & Management Institute, the HCC will visit 12 cities in 5 months giving health-care FMs the opportunity to learn about planning High Performance projects.

Attendees can earn 3 CFM points & 3 HSW learning units.

See page 2 for more details or visit [www.squarefootage.net](http://www.squarefootage.net).

October 24-26

### **IFMA's World Work Place**

<http://www.worldworkplace.org/>

November 3-6

### **Health Care Design 07/AIA AAH Conference**

Dallas, TX

<http://www.healthdesign.org/education/conf/>

*"The poorest man would not part with health for money, but the richest would gladly part with all their money for health."*

*Charles Caleb Colton*

## Council President

Gary W. Collins, AIA

Anshen and Allen Architects

Ph: 312-622-3732

E-mail: [gary.collins@anshen.com](mailto:gary.collins@anshen.com)

### **Vice President, Programs**

Glenn H. Fischer

Corporate Realty, Design & Management Institute

Ph: 503-274-7162

Email: [gfischer@squarefootage.net](mailto:gfischer@squarefootage.net)

### **Vice President, News & Information**

Jeff Kent

Nemours Foundation

Ph: 904-232-4274

Email: [jkent@nemours.org](mailto:jkent@nemours.org)

### **Vice President, Membership**

William L. Gregory, PE,CFM,IFMA Fellow

Conemaugh Valley Memorial Hospital

Ph: 814-534-9171

Email: [wgregor@conemaugh.org](mailto:wgregor@conemaugh.org)

### **Vice President, Research**

Scott Patton

Nurture by Steelcase

Ph: 312-321-3850

Email: [spatton1@steelcase.com](mailto:spatton1@steelcase.com)

### **Council Treasurer**

Malcolm Lim, PE

Construction Technology Laboratories, Inc.

Ph: 847-972-3264

Email: [mklm@c-t-l.com](mailto:mklm@c-t-l.com)

### **Interim Secretary**

Jennifer Coble

Ph: 773-504-1174

Email: [Jennifer.coble@gmail.com](mailto:Jennifer.coble@gmail.com)

For a complete list of council chairs, see our website at [www.ifma-hc.org](http://www.ifma-hc.org)

## *2007 FacilityCare Editorial Calendar*

Month of Publication	Editorial Due Date
July	May 16, 2007
October	Aug. 22, 2007
November	Sept. 21, 2007